

50-70GHz Power Detector, 1.85mm



Description:

AT-DET-5070T is a V Band 1.85mm power detector that covers frequency range from 50-70GHz.

The power detection range is -50 to -20dBm, and sensitivity is 4500V/W. There is no dc block at RFin port. DC Block required if there is DC offset in RF-in port.

More information, please visit www.atmicrowave.com

Feature

- ✓ Frequency: 50-70GHz
- ✓ High Sensitivity
- ✓ Max Linear: -20dBm
- ✓ No bias

Application

- ✓ V Band Imaging
- ✓ FOD (Foreigner Objects Debris)
- ✓ Test Equipment
- ✓ ROF (RF Over Fiber)
- ✓ Radar System

Electronical Specifications:

Parameter	Min	Typical	Max
Frequency Range		50-70GHz	
RF Input Power	-50dBm		-20dBm
Sensitivity		4500V/W	
Return Loss		-10dB	
Bias		NO	
Power Handling			0dBm
Spec Temp		25C	





AT-DET-5070T

Power Detector, 50-70GHz

Mechanical Information

Item	Description
Input Port	1.85mm Male
IF Output Port	SMA Female
Case Material	Copper
Finish	Gold Plated
Weight	100g
Size:	See outline

Absolute Maximum Ratings Table

Parameter	Value
RF Input Power	0 dBm
Operating Temperature	-20 to +70C
Storage Temperature	-65 to +150C

Caution:

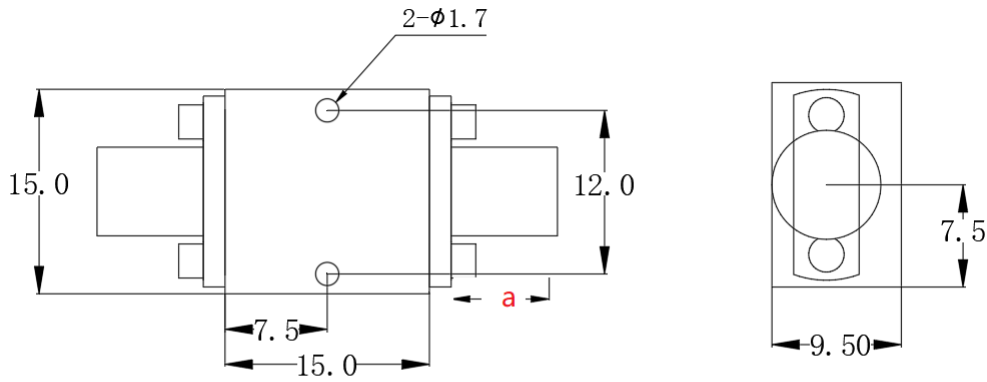
Please pay attention to the case temperature. If case temperature exceed higher than +50C, heat sink and fan are required, or the amplifier may be damaged.

Notes:

1. Datasheet may be changed according to uDETate of MMIC, Raw materials , process, and so on.
2. This data is only for reference, not for guaranteed specifications.
3. Please contact AT Microwave team to make sure you have the most current data.



Dimension:



	<26.5GHz	<40GHz	<50GHz	<67GHz
Connector	SMA	2.92mm	2.4mm	1.85mm
Lenth of a	9.4mm	9.5mm	10.8mm	11.3mm

Note: Female Default. Contact with us for other types.

